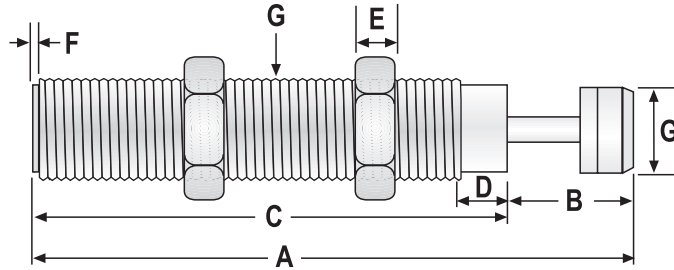


Self Compensating Minibuffers



EFM Series

- Operating Temperature: 14° to 176°F (-10° to 80°C)
- Two locknuts provided with each minibuffer
- Flange and Footlug mounts available



SPECIFICATIONS: EFM MINIBUFFERS

DIMENSIONS IN INCHES (MM)									
MODEL	STROKE	A	B	C	D	E	F	G	H
EFM 08-06-6C, 7C, 8C	.24 (6)	2.17 (55)	.57 (14.5)	1.60 (40.5)	-	.12 (3)	.19 (5)	.26 (6.5)	M8 X 1.0
EFM 10-08-6C, 7C, 8C	.31 (8)	2.44 (62)	.65 (16.5)	1.79 (45.5)	-	.12 (3)	.19 (5)	.33 (8.5)	M10 X 1.0
EFM 12-10-6C, 7C, 8C	.39 (10)	2.83 (72)	.77 (19.5)	2.11 (53.5)	-	.16 (4)	.18 (4.5)	.41 (10.5)	M12 X 1.0
EFM 10-20-1C, 2C	.80 (20)	4.90 (125)	1.36 (35)	3.54 (90)	.12 (3)	.31 (8)	.43 (11)	.71 (18)	7/8-14 UNF (-1,-2)
EFM 10-20-6C, 7C									M20 X 1.5 (-6,-7)
EFM 11-25-1C, 2C	1.0 (25)	5.06 (128)	1.71 (43)	3.35 (85)	.55 (14)	.39 (10)	.12 (3)	.87 (22)	1-12 UNF (-1, -2)
EFM 11-25-6C, 7C									M25 X 2.0 (-6, -7)
EFM 27-25-7C, 8C	1.0 (25)	5.93 (151)	1.56 (40)	4.4 (111)	-	.39 (10)	.39 (10)	.89 (23)	M27 X 3.0
EFM 11-40-1C	1.6 (40)	8.31 (211)	3.25 (83)	5.06 (129)	.55 (14)	.39 (10)	.12 (3)	.87 (22)	1-12 UNF (-1)
EFM 11-40-6C									M25 X 2.0 (-6)
EFM 20-50-2C	2.0 (50)	9.57 (243)	3.47 (88)	6.10 (155)	.71 (18)	.59 (15)	.55 (14)	1.18 (30)	M36 X 1.5

SIZE SELECTION

MODEL	EFFECTIVE WEIGHT	ENERGY PER CYCLE	ENERGY PER HOUR	MAX IMPACT SPEED	SPRING FORCE		MAX CYCLES PER MINUTE	WEIGHT
	lbs (kg)	In lbs (Nm)	In lbs (Nm)	In/Sec (m/sec)	Ext.	Comp.		
EFM 08-06-6C	12 (5.6)	16 (1.8)	21,000 (2,400)	78 (2.0)	.4 (.18)	.9 (.41)	22	.2 (.01)
EFM 08-06-7C	22 (10)	16 (1.8)	21,000 (2,400)	47 (1.2)	.4 (.18)	.9 (.41)	22	.2 (.01)
EFM 08-06-8C	50 (23)	16 (1.8)	21,000 (2,400)	31 (.8)	.4 (.18)	.9 (.41)	22	.2 (.01)
EFM 10-08-6C	9.7 (4.4)	28 (3.2)	50,400 (5,760)	101 (2.6)	.5 (.23)	1.0 (.45)	30	.3 (.01)
EFM 10-08-7C	22 (10)	28 (3.2)	50,400 (5,760)	59 (1.5)	.5 (.23)	1.0 (.45)	30	.3 (.01)
EFM 10-08-8C	88 (40)	28 (3.2)	50,400 (5,760)	31 (.8)	.5 (.23)	1.0 (.45)	30	.3 (.01)
EFM 12-10-6C	26.4 (12)	53 (6)	95,500 (10,800)	101 (2.6)	.8 (1.8)	3.7 (1.7)	30	.4 (.02)
EFM 12-10-7C	41 (19)	53 (6)	95,500 (10,800)	59 (1.5)	.8 (1.8)	3.7 (1.7)	30	.4 (.02)
EFM 12-10-8C	165 (75)	53 (6)	95,500 (10,800)	31 (.8)	.8 (1.8)	3.7 (1.7)	30	.4 (.02)
EFM 10-20-1C	66 (30)	260 (29)	468,000 (52,800)	55 (1.4)	2.0 (0.9)	5.1 (2.3)	30	.4 (.02)
EFM 10-20-6C								
EFM 10-20-2C	33 (15)	260 (29)	468,000 (52,800)	79 (2.0)	2.0 (0.9)	5.1 (2.3)	30	.4 (.02)
EFM 10-20-7C								
EFM 11-25-1C	242 (110)	712 (80)	640,800 (72,300)	47 (1.2)	4.4 (2.0)	7.1 (3.2)	15	.64 (.03)
EFM 11-25-6C								
EFM 11-25-2C	75 (34)	712 (80)	640,800 (72,300)	87 (2.2)	4.4 (2.0)	7.1 (3.2)	15	.64 (.03)
EFM 11-25-7C								
EFM 27-25-7C	952 (433)	690 (78)	621,400 (70,200)	79 (2.0)	4.4 (2.0)	7.1 (3.2)	15	.79 (.04)
EFM 27-25-8C	3812 (1733)	690 (78)	621,400 (70,200)	47 (1.2)	4.4 (2.0)	7.1 (3.2)	15	.79 (.04)
EFM 11-40-1C	662 (300)	1042 (118)	750,240 (84,700)	118 (3.0)	4.4 (2.0)	12.6 (5.7)	12	1.32 (.06)
EFM 11-40-6C								
EFM 20-50-2C	2205 (1002)	3472 (392)	1,666,560 (188,100)	118 (3.0)	6.6 (3.0)	18.3 (8.3)	8	2.21 (.10)